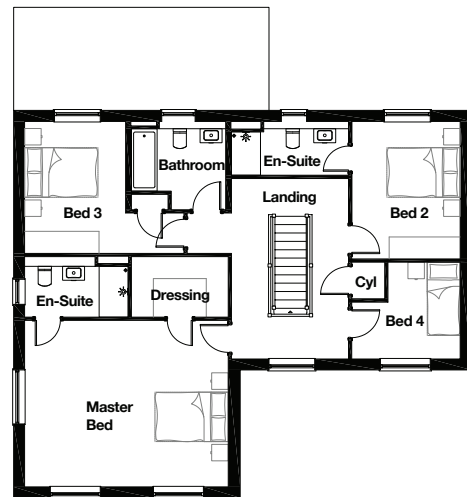
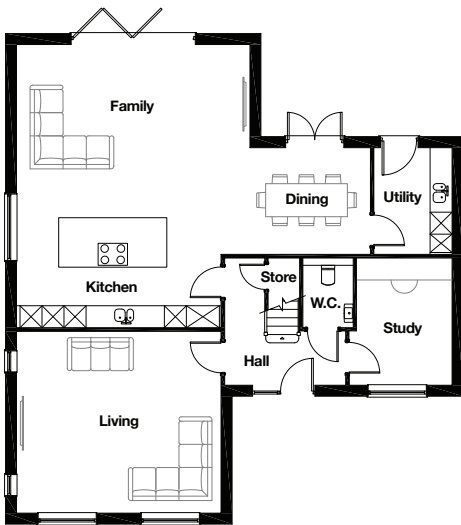


THE WILLOW HOUSE

4 BEDROOM DETACHED HOME



GROUND FLOOR

| | | | | | | |
|-----------------------|---------|---|---------|--------|---|--------|
| Living | 5.525m | x | 4.905m | 18' 2" | x | 16' 1" |
| Kitchen/Dining/Family | 9.625m* | x | 7.670m* | 31' 7" | x | 25' 2" |
| Study | 2.785m* | x | 3.415m | 9' 2" | x | 11' 2" |
| Utility | 2.110m | x | 2.855m | 6' 11" | x | 9' 4" |
| W.C. | 1.370m | x | 1.870m | 4' 6" | x | 6' 2" |

FIRST FLOOR

| | | | | | | |
|----------------|---------|---|---------|--------|---|---------|
| Master Bedroom | 5.525m | x | 4.515m | 18' 2" | x | 14' 10" |
| Dressing | 2.640m | x | 1.650m | 8' 8" | x | 5' 5" |
| En-Suite | 2.795m* | x | 1.650m* | 9' 2" | x | 5' 5" |
| Bedroom 2 | 2.930m | x | 3.720m | 9' 7" | x | 12' 2" |
| En-Suite | 3.190m* | x | 1.440m | 10' 6" | x | 4' 9" |
| Bedroom 3 | 3.970m* | x | 3.570m | 13' 0" | x | 11' 9" |
| Bedroom 4 | 2.930m* | x | 2.615m* | 9' 7" | x | 8' 7" |
| Bathroom | 2.570m | x | 2.385m* | 8' 5" | x | 7' 10" |

*Denotes maximum dimension

Whilst every care is taken in the preparation of the information and artist impression on this leaflet, they are for guidance only. External details and finishes may vary on individual plots and from one development to another. Local authority requirements and our policy of continuous improvement may cause details to be varied. Therefore these details do not constitute any part of an offer or a contract and all dimensions are approximate. 4/26