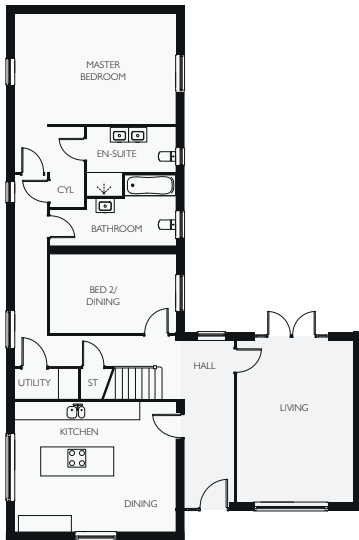
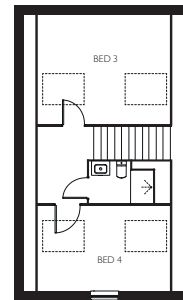


PLOT 2
SMITHY BARN
 4 BEDROOM DETACHED HOME



GROUND FLOOR

Living	3.85m x 5.415m	12' 8" x 17' 9"
Kitchen/Dining/Family	5.415m x 4.33m	17' 9" x 14' 2"
Utility	2.085m x 1.010m	6' 10" x 3' 4"
Master Bedroom	5.415m x 5.325m*	17' 9" x 17' 6"
En-Suite	2.995m x 2.345m*	9' 10" x 7' 8"
Bedroom 2	4.225m x 2.685m	13' 10" x 8' 10"
Bathroom	4.225m x 2.335m*	13' 10" x 7' 8"



FIRST FLOOR

Bedroom 3	4.575m x 3.685m	15' 0" x 12' 1"
Bedroom 4	4.575m x 2.900m	15' 0" x 9' 6"
Bathroom	2.170m x 1.400m*	7' 1" x 4' 7"



Whilst every care is taken in the preparation of the information and artist impression on this leaflet, they are for guidance only. External details and finishes may vary on individual plots and from one development to another. Local authority requirements and our policy of continuous improvement may cause details to be varied. Therefore these details do not constitute any part of an offer or a contract and all dimensions are approximate.

*denotes maximum room size