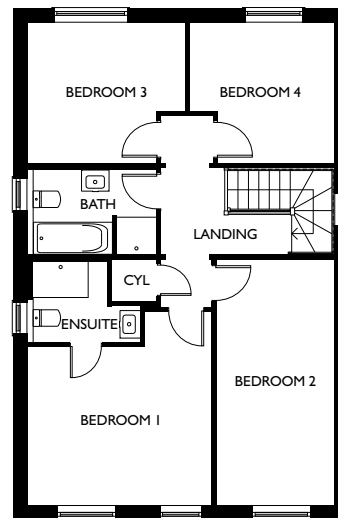
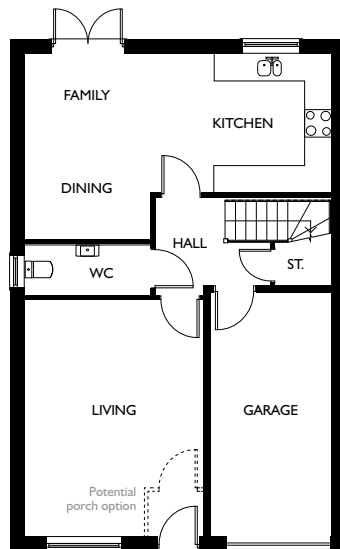




# THE RADFORD

## 4 BEDROOM DETACHED HOME



### GROUND FLOOR

Living	3.870m x 5.100m	12' 8" x 16' 9"
Kitchen/Dining/Family	6.650m* x 4.020m*	21' 10"* x 13' 2"*
W.C.	2.700m x 1.115m	8' 10" x 3' 8"
Garage	2.655m x 5.325m	8' 9" x 17' 6"

### FIRST FLOOR

Bedroom 1	3.995m x 4.200m*	13' 1" x 13' 9"*
En-Suite	2.455m* x 1.775m*	8' 1"* x 5' 10"*
Bedroom 2	2.545m x 5.340m	8' 4" x 17' 6"
Bedroom 3	3.420m* x 3.055m*	11' 3"* x 10' 0"*
Bedroom 4	3.140m* x 3.055m*	10' 4"* x 10' 0"*
Bathroom	2.800m x 1.840m	9' 2" x 6' 0"