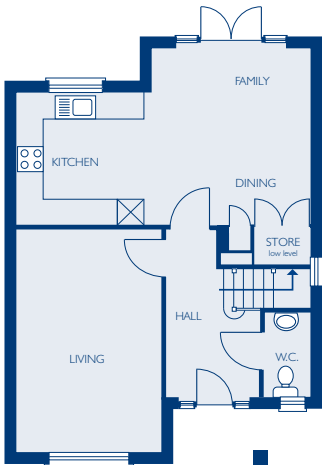




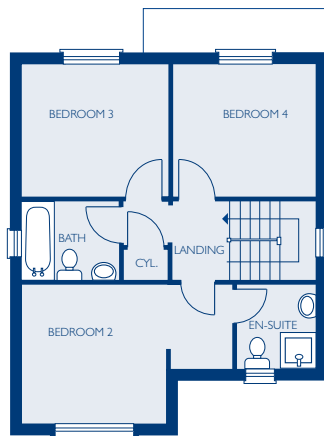
THE WREN

4 BEDROOM DETACHED HOUSE



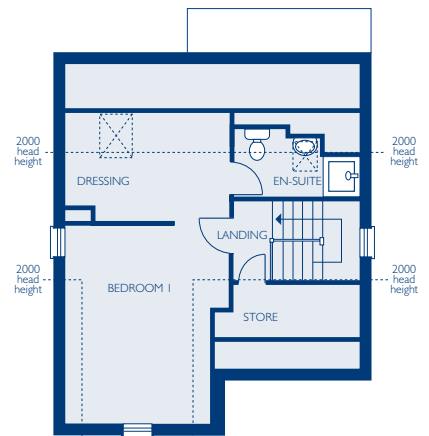
GROUND FLOOR

	METRIC	IMPERIAL
Living	3215 x 4955	10' 7" x 16' 3"
Kitchen / Dining / Family	6590 x 3955*	21' 7" x 13' 0"*
W.C.	1045 x 1840	3' 5" x 6' 0"



FIRST FLOOR

	METRIC	IMPERIAL
Bedroom 2	4725 x 3075*	15' 6" x 10' 1"*
En-suite	1775 x 1840	5' 10" x 6' 0"
Bedroom 3	3325 x 2940	10' 11" x 9' 8"
Bedroom 4	3175 x 2940	10' 5" x 9' 8"
Bathroom	2175 x 1755	7' 2" x 5' 9"



SECOND FLOOR

	METRIC	IMPERIAL
Bedroom 1	3680 x 4445*	12' 1" x 14' 7"*
Dressing	3680 x 2055	12' 1" x 6' 9"
En-suite	2815 x 1530	9' 3" x 5' 0"*



Whilst every care is taken in the preparation of the information and artist impression on this leaflet, they are for guidance only. External details and finishes may vary on individual plots and from one development to another. Local authority requirements and our policy of continuous improvement may cause details to be varied. Therefore these details do not constitute any part of an offer or a contract and all dimensions are approximate. * Denotes that one or both of the given measurements is a maximum dimension. Aug 10

A Move In The Right Direction



www.dorbcresthomes.co.uk