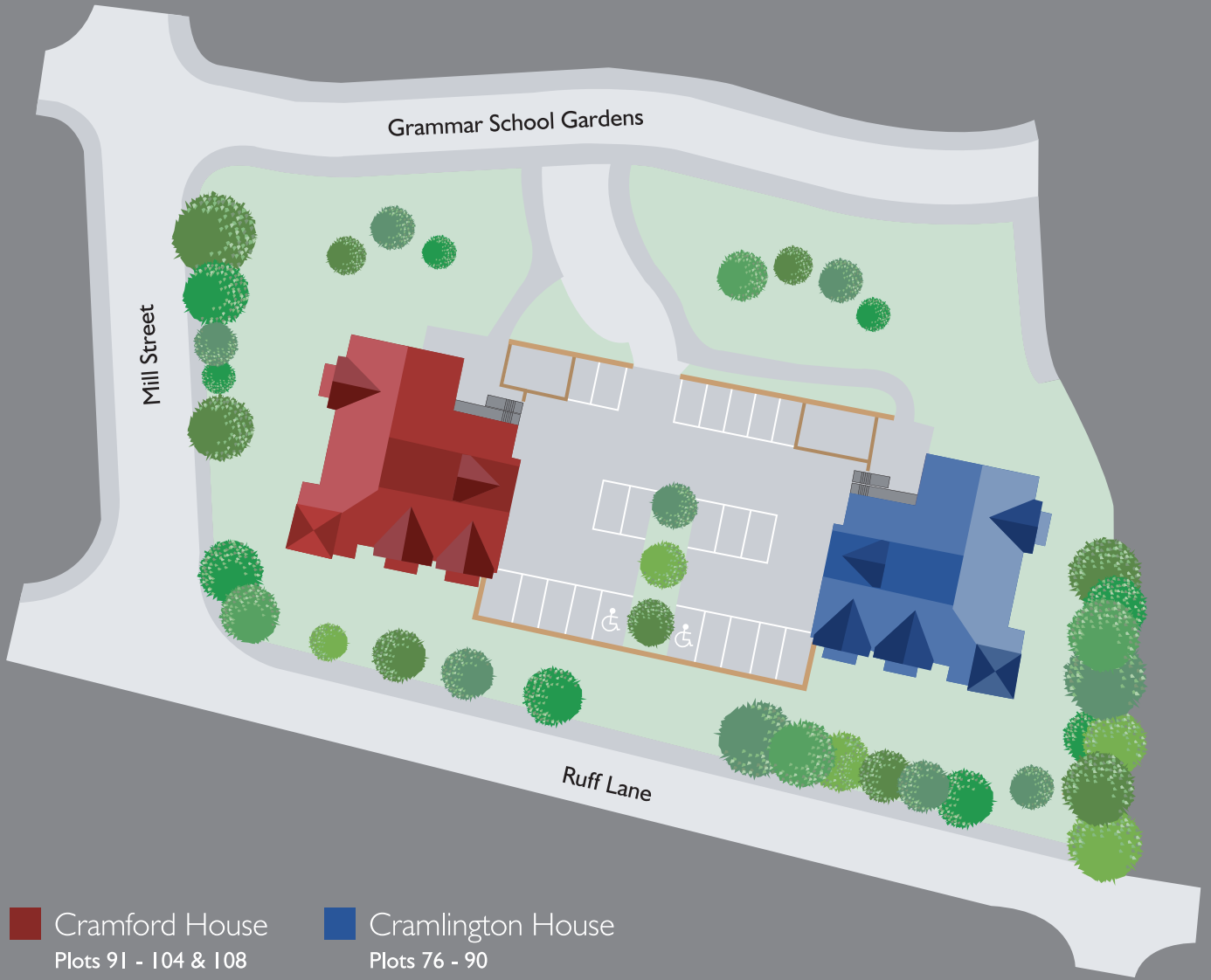


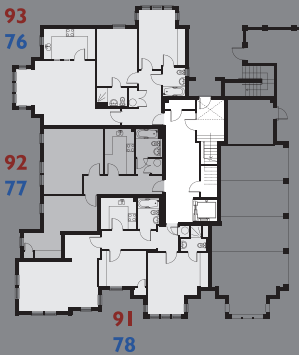
Development plan



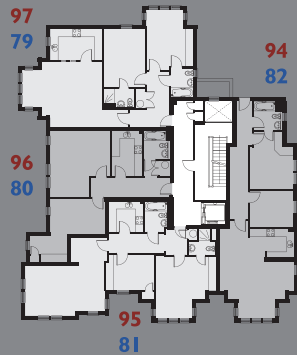
■ Cramford House
Plots 91 - 104 & 108

■ Cramlington House
Plots 76 - 90

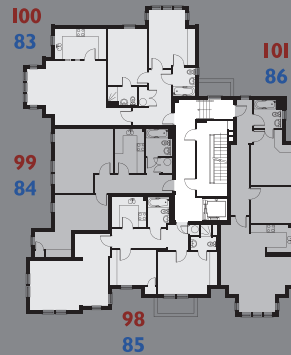
Ground floor



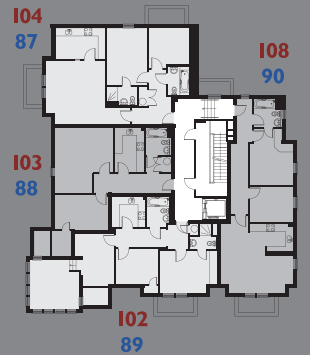
First floor



Second floor



Third floor



A move in the right direction

Whilst every care has been taken in the preparation of the information and artist impression on this leaflet, they are for guidance only. External details and finishes may vary on individual plots. Local authority requirements and our policy of continuous improvement may cause details to be varied. These details do not constitute any part of an offer or a contract and all dimensions are approximate due to the nature of a building refurbishment.

Whilst every effort has been made to ensure that the information contained in this development plan is correct, it is designed as a guide and Dorbcrest Homes reserves the right to amend the details as necessary and without notice. This does not constitute or form any part of a contract or sale. This illustration is an artist's impression only and does not accurately depict landscaping.