



All the
Qualities
you're looking for
in a new home



DORBCREST *Homes*

A move in the right direction



The Dorbcrest Difference

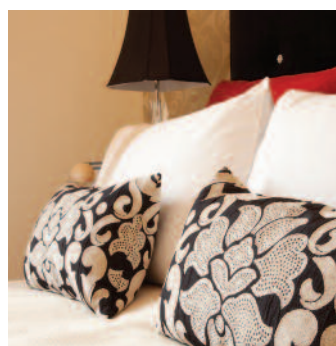
Quality in every last detail...

Being true to that ideal means more than simply building the best quality homes in the best possible locations. It means making sure that whenever you need us, we're there with the very best help and advice. That's why we're full of ideas to make the path to the door of your new Dorbcrest home a little smoother. For example, our Part Exchange and Make a Move schemes take the hassle and headaches out of buying and selling.

It's also why, when you've got a question with your new home, you can talk to a member of our qualified team whose job it is to make sure your enquiry is dealt with promptly and professionally, every time.

The way we look at it, you're a Dorbcrest customer from your first enquiry to settling into your brand new home. So we'll make sure you get the full Dorbcrest service from start to finish.





Homes for people who simply **don't** want to **compromise**

As a family run, local housebuilder we've learnt that true value is in the fine detail. In the past, choosing a new home often involved a little give and take. When you buy a new home from Dorbcrest Homes however, you don't have to make those choices, because when we build a house or an apartment, we don't build in compromise; we build in all the qualities you're looking for in a new home.





Designed with you in mind

Fashion, as they say, is temporary. True design makes a statement forever.

Nowhere is this more evident than in a Dorbcrest home. For over thirty years now we've been building homes not to the whim of the 'next big thing' but to the careful and considered plans of Architects and Interior Designers who think and work in terms of decades.

The result is a portfolio of homes that mix timeless design values with contemporary style whose look and feel will never date.



Desirability by design

Every new Dorbcrest home is built to make life easier for you.

Sensibly placed doors allow a natural flow of light through your home and designer fixtures and fittings ensure luxury and comfort throughout.

They seem like little things and, because they work so well, you probably won't even notice them. But they're the perfect example of the kind of small considerations which give your home comfort and desirability like no other.



Workmanship that lasts and lasts

You'll find that housebuilders often brag about their homes 'lasting a lifetime'...

The way we look at it, with a family growing up under one roof, a house should be good for your lifetime. That's why we take particular care with the standard of materials we use in our developments, and the standard of the designers, builders and workmen we employ. They put as much pride into building a new house as you will in making it the perfect home. And this incredible care and attention to detail is on display everywhere you look in any new Dorbcrest Home.



Quality and performance

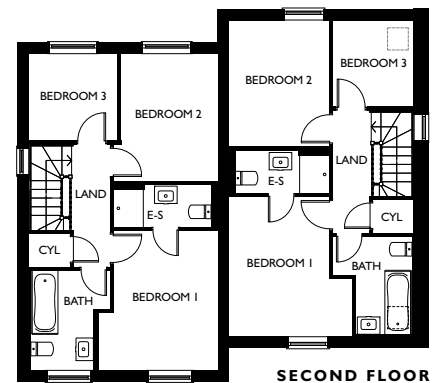
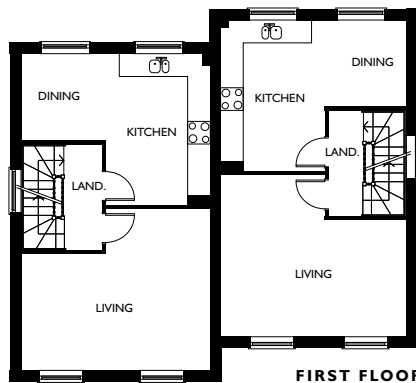
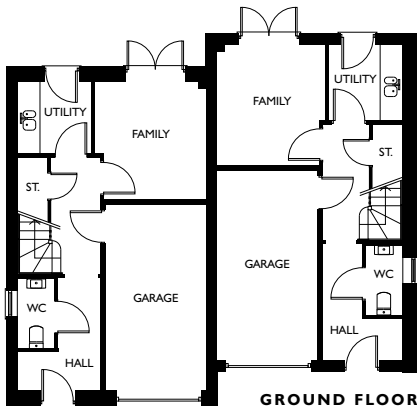
We want you to be happy with your new home for as long as you stay there.

That could be many years, so you'll find we've planned for the long run in kitchens and kitchen appliances that are robust, reliable and practical. In bathrooms and shower cubicles that remain stylish, scratch free and 'fit for purpose'. And in floors, floorcoverings, skirting boards and even furnishings that can take the knocks of everyday life.



THE SAMLESBURY & THE DUCKINFIELD

3 BEDROOM SEMI-DETACHED HOMES



THE SAMLESBURY (LEFT)

GF Family	2.935m* x 3.100m	9' 8"* x 10' 2"
Utility	1.940m x 1.890m	6' 4" x 6' 2"
W.C.	0.960m x 1.845m	3' 2" x 6' 1"
Garage	2.665m x 4.935m	8' 9" x 16' 2"
FF Living	4.965m* x 4.255m*	16' 3" x 14' 0"*
Kitchen/Dining	4.965m* x 3.985m*	16' 3"* x 13' 1"*
SF Bedroom 1	3.145m* x 3.695m	10' 4"* x 12' 1"
En-Suite	2.585m x 1.120m	8' 6" x 3' 8"
Bedroom 2	2.745m* x 3.330m	9' 0"* x 10' 11"*
Bedroom 3	2.330m x 2.260m	7' 8" x 7' 5"
Bathroom	2.095m* x 2.625m	6' 10"* x 8' 7"

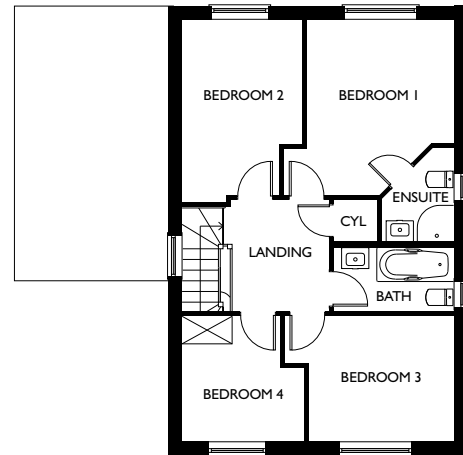
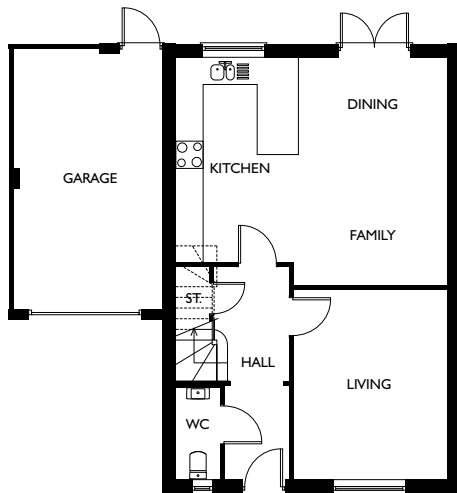
THE DUCKINFIELD (RIGHT)

GF Family	2.845m* x 3.190m	9' 4"* x 10' 6"
Utility	1.940m x 1.980m	6' 4" x 6' 6"
W.C.	0.960m x 1.845m	3' 2" x 6' 1"
Garage	2.665m x 5.025m	8' 9" x 16' 6"
FF Living	4.875m* x 4.255m*	16' 0" x 14' 0"*
Kitchen/Dining	4.875m* x 3.985m*	16' 0"* x 13' 1"*
SF Bedroom 1	3.255m* x 3.695m	10' 8"* x 12' 1"
En-Suite	2.495m x 1.120m	8' 2" x 3' 8"
Bedroom 2	2.655m x 3.330m	8' 9" x 10' 11"
Bedroom 3	2.130m x 2.260m	7' 0" x 7' 5"
Bathroom	2.095m* x 2.595m	6' 10"* x 8' 6"



THE FAIRHURST

4 BEDROOM DETACHED HOME



GROUND FLOOR

Living	3.370m x 4.140m	11' 1" x 13' 7"
Kitchen/Dining/Family	5.925m x 4.985m*	19' 5" x 16' 4"*
W.C.	0.950m x 1.990m	3' 1" x 6' 6"
Garage	3.275m x 5.740m	10' 9" x 18' 10"

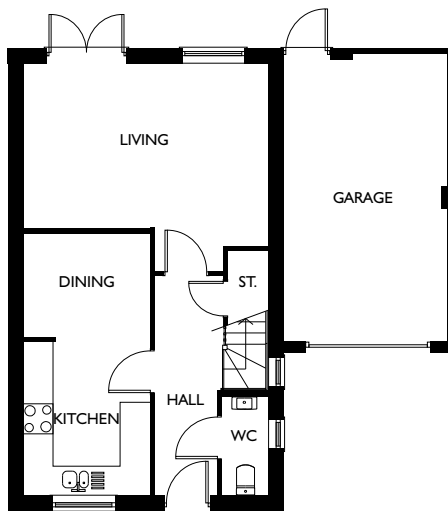
FIRST FLOOR

Bedroom 1	3.710m* x 3.850m*	12' 2"* x 12' 8"*
En-Suite	1.555m* x 2.065m*	5' 1"* x 6' 9"*
Bedroom 2	2.625m* x 4.000m*	8' 7"* x 13' 1"*
Bedroom 3	3.695m* x 2.730m	12' 1"* x 8' 11"
Bedroom 4	2.665m* x 2.730m	8' 9"* x 8' 11"
Bathroom	2.630m x 1.400m	8' 8" x 4' 7"



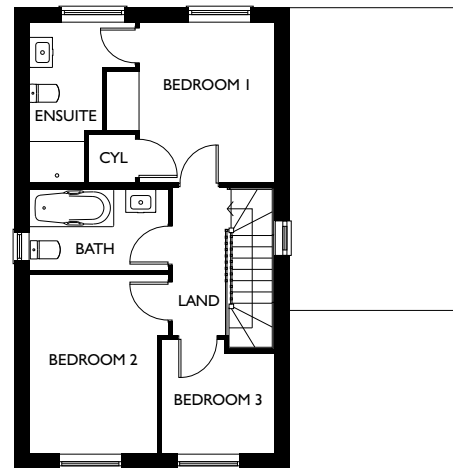
THE LATHOM

3 BEDROOM DETACHED HOME



GROUND FLOOR

Kitchen/Dining	2.510m x 5.200m	8' 3" x 17' 1"
Living	4.850m x 4.130m*	15' 11" x 13' 7"*
W.C.	0.910m x 1.930m	3' 0" x 6' 4"
Garage	3.275m x 5.740m	10' 9" x 18' 10"



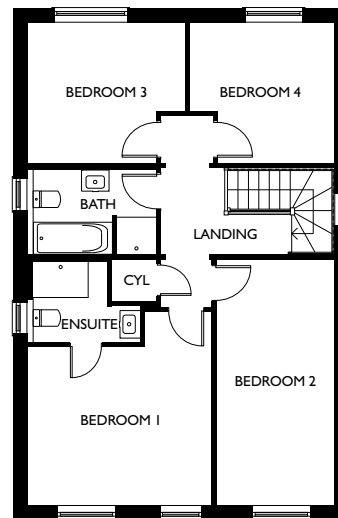
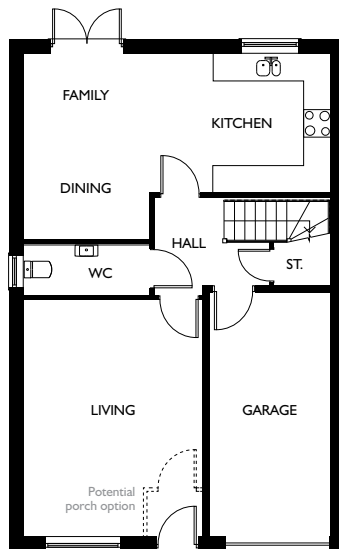
FIRST FLOOR

Bedroom 1	3.325m* x 3.160m	10' 11"* x 10' 4"
En-Suite	2.080m* x 3.160m	6' 10"* x 10' 4"
Bedroom 2	2.740m* x 3.540m	9' 0"* x 11' 7"
Bedroom 3	2.235m x 2.250m*	7' 4" x 7' 5"*
Bathroom	2.740m x 1.625m	9' 0" x 5' 4"



THE RADFORD

4 BEDROOM DETACHED HOME



GROUND FLOOR

Living	3.870m x 5.100m	12' 8" x 16' 9"
Kitchen/Dining/Family	6.650m* x 4.020m*	21' 10"* x 13' 2"*
W.C.	2.700m x 1.115m	8' 10" x 3' 8"
Garage	2.655m x 5.325m	8' 9" x 17' 6"

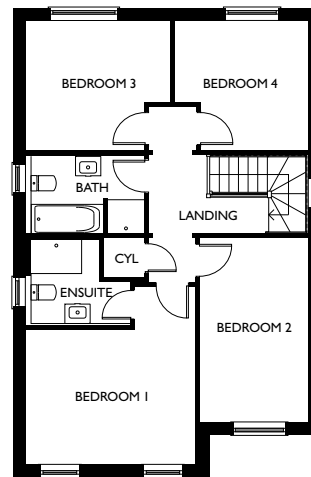
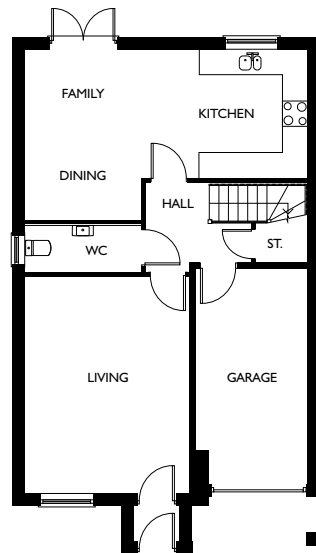
FIRST FLOOR

Bedroom 1	3.995m x 4.200m*	13' 1" x 13' 9"*
En-Suite	2.455m* x 1.775m*	8' 1"* x 5' 10"*
Bedroom 2	2.545m x 5.340m	8' 4" x 17' 6"
Bedroom 3	3.420m* x 3.055m*	11' 3"* x 10' 0"*
Bedroom 4	3.140m* x 3.055m*	10' 4"* x 10' 0"*
Bathroom	2.800m x 1.840m	9' 2" x 6' 0"



THE REDFEARN

4 BEDROOM DETACHED HOME

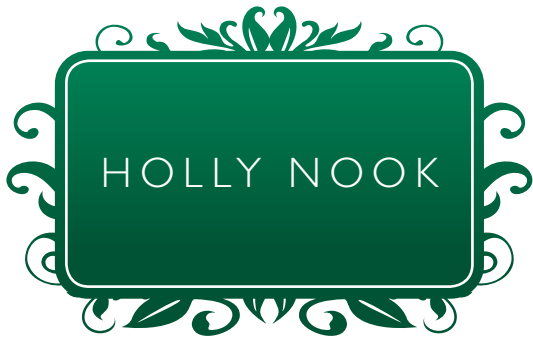


GROUND FLOOR

Living	3.870m x 5.100m	12' 8" x 16' 9"
Kitchen/Dining/Family	6.650m* x 4.020m*	21' 10"* x 13' 2"*
W.C.	2.700m x 1.115m	8' 10" x 3' 8"
Garage	2.650m x 5.100m*	8' 8" x 16' 9"*

FIRST FLOOR

Bedroom 1	4.010m x 4.200m*	13' 2" x 13' 9"*
En-Suite	2.455m* x 2.025m*	8' 1"* x 6' 8"*
Bedroom 2	2.550m x 4.325m	8' 4" x 14' 2"
Bedroom 3	3.420m* x 3.055m	11' 3"* x 10' 0"
Bedroom 4	3.140m* x 3.055m	10' 4"* x 10' 0"
Bathroom	2.800m x 1.840m	9' 2" x 6' 0"



DEVELOPMENT PLAN



- | | | |
|--|---|--|
| <p>■ REDFEARN
4 BEDROOM DETACHED HOME</p> | <p>■ RADFORD
4 BEDROOM DETACHED HOME</p> | <p>■ FAIRHURST
4 BEDROOM DETACHED HOME</p> |
| <p>■ LATHOM
3 BEDROOM DETACHED HOME</p> | <p>■ SAMLESBURY
3 BEDROOM SEMI-DETACHED HOME</p> | <p>■ DUCKINFIELD
3 BEDROOM SEMI-DETACHED HOME</p> |